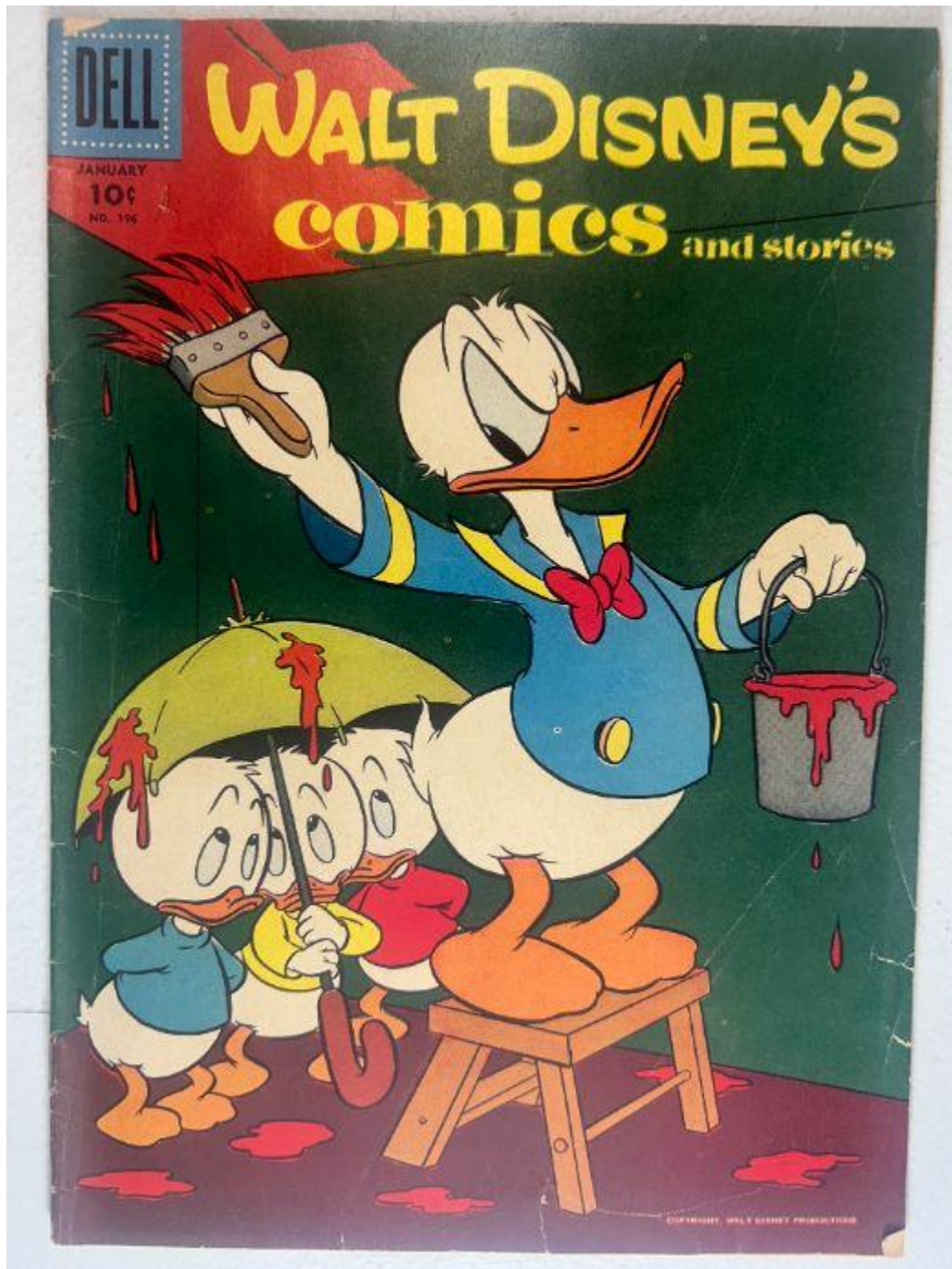


■ **Walt Disney's Comics and Stories – Vol. 17 No. 4
(January 1955)**

Evaluation Date: April 1, 2026



Summary of Observations

The comic retains both covers and all interior pages, which remain attached and aligned. The front and back covers lie flat with no visible spine separation. Interior pages show cream-to-light-tan paper color with consistent toning across photographed pages and no evidence of cracking during the brittleness test.

Structural defects are concentrated at the **staple and centerfold fold areas**. Both staples show **heavy, dark rust**, with **visible rust transfer to surrounding paper fibers**. At the centerfold, the **paper surrounding each staple hole is torn, enlarged, and frayed**, with **measurable loss of original paper material** immediately adjacent to the staple penetrations. These defects are localized but clearly visible and mechanically significant.

No detached pages are present, but the **centerfold attachment depends on torn and thinned paper fibers rather than intact fold stock**. Aside from staple-related damage, wear consists of minor edge wear and corner rounding consistent with handling.

Front Cover — Observations (IMG_2059)

Photo Condition & Quality

Sharp, well-lit image showing full cover area, all edges, corners, and spine edge.

Findings

- Top edge: continuous but uneven, with **shallow edge abrasion** visible along approximately **35–40 mm** of the upper margin.
- Bottom edge: intact, with **two small nicks** measuring approximately **2–3 mm** each near the center.
- Corners:
 - Upper left and upper right corners show **rounded curvature** with no missing material.
 - Lower corners rounded slightly more, with **edge blunting extending ~4–5 mm** inward.
- Spine edge: continuous, no splitting observed from top to bottom.
- Surface: **fine linear surface scuffing** visible at mid-lower area of green field; no gloss break.

Overall Impression

Front cover remains structurally intact with **edge rounding and light abrasion only**.

Back Cover — Observations (IMG_2060)

Photo Condition & Quality

Clear image showing entire advertisement and all margins.



GUNS OF THE WEST

HARMLESS

"SHOOTIN' OUTFITS!"

NO. 1967 DAISY "ANNIE OAKLEY GOLDEN SMOKE RIFLE OUTFIT"
 Gift-set for girls as well as boys has 22" golden-white smoke rifle; genuine leather holster set—cap pistol plus white post canteen! In Gift-Box: **\$9.95** only. (Wool Coat: \$10.49)

NO. 1961 DAISY COWBOY KING SHOOTIN' OUTFIT
 Our best set! Super Scope Rifle, double holster set, 2 Cap Pistols. **\$14.95** (Wool Coat: \$15.95)

NO. 1915 DAISY LITTLEST COWBOY SHOOTIN' OUTFIT
 For "very junior" cowboys, cowgirl! A pop gun, holster set, 2 cap pistols! In box, all: **\$2.98** (Wool Coat: \$3.19)

NO. 1965 DAISY FRONTIER SHOOTIN' OUTFIT
 Your Christmas "Fun Guns" gift-set! You get: a 32" Super Scope Rifle—shoots harmless smoke, noise—with a 11" golden scope mounted; a genuine leather "3-Way" Holster Set; a Cap Pistol; a real pint Cowboy Canteen; a special canteen "Dolter"! All in gift-box. Set Parents' Magazine Commended. **\$9.95** Only. (Wool Coat: \$10.95)

NO. 1160 DAISY SUPER SCOPE RIFLE ONLY
 Same rifle as shown in Outfit 1965; has golden lover, jacket design. Yours for **\$4.98** (Wool Coat: \$5.35)

NO. 967 GOLDEN SMOKE RIFLE ONLY
 Same rifle illustrated in Outfit 1967. Makes loud, harmless bang, smoke. Blue sling. **\$4.98** (Wool Coat: \$5.35)
*D. & W. Co. Patent Pending, U.S.A.
 Price Subject To Change Without Notice

NO. 2562 DAISY 4-WAY HOLSTER-CANTEEN SET
 Quality Daisy holster sets cost 45c and up at stores. See them. Fastest on Daisy! "2562" has 3 sliding holsters, 2 pistols, canteen. **\$7.95** Only

NO. 1802 DAISY COWBOY CANTEEN
 Carry 1 pint of water or pop in it on hikes! 6" diameter, molded. Carrying pouch of wadded, fringed leather; a useful knapsack without the canteen in it. Comes in beautiful gift-box. **\$2.98**

WHERE TO BUY DAISYS
 At toy, department, hardware, sports goods, chain stores. If dealer can't supply you order direct sending number and price of article wanted (with your name, address)—we'll ship postpaid. Send 3c stamp for DAILY CATALOG!
*When Order in Canada, Send No. Canadian Dollar Stamp Accepted.

FREE CATALOG!
 Daisy Manufacturing Company
 Dept. 7917 Plymouth, Michigan, U.S.A.
 1 enclose unused 3c stamp for handling cost.
 Send FREE Daisy Catalog postpaid.

NAME.....
 ST. & No.....
 CITY.....ZONE.....STATE.....



2 FAMOUS NAMES YOU TRUST!

Tell Mom and Dad to Ask for GENUINE DAISY

GUNS OF THE WEST SHOOTIN' OUTFITS • SUPER PLAY RIFLES • HOLSTER-CANTEEN SETS • POP GUNS

DAISY MANUFACTURING COMPANY • DEPT. 7917 • PLYMOUTH, MICHIGAN, U.S.A.

Findings

- Upper edge: intact with slight waviness; no tears.
- Lower edge: **single shallow edge abrasion ~6 mm wide**, superficial.
- Corners: consistent rounding similar to front cover.
- Surface: **scattered, pinpoint dark specks** (likely surface soil) across lower third; no staining halos.

Overall Impression

Back cover intact with **minor surface soil and edge wear only**.

Interior Pages — Observations (IMG_2061–IMG_2065)

Page Color

Cream to light tan, consistent across photographed pages.



Centerfold — Observations (IMG_2066)

Photo Condition & Quality

Clear image showing both pages, fold line, and both staple penetrations.



Findings

- Upper staple hole:
 - Original round staple perforation enlarged into an **irregular oval opening approximately 3.5–4 mm wide**.
 - **Paper fibers torn and frayed** along the vertical fold for approximately **7 mm above and below** the staple hole.
 - **Brown rust staining** radiates outward up to approximately **5 mm** from the hole.
- Lower staple hole:
 - Staple perforation enlarged to approximately **4–4.5 mm width**.
 - **Irregular paper loss** visible on the fold edge, with missing fibers extending approximately **5 mm** along the fold.
 - **Rust staining** extending up to **6 mm** into adjacent paper.
- Fold line between staples:
 - Visible thinning of paper fibers; surface texture uneven, indicating **loss of original fold strength**.
- Centerfold pages remain connected at both staples; no complete separation observed.

Overall Impression

Centerfold remains attached, but **both staple penetrations show measurable tearing, enlargement, and paper loss**, with rust migration into the fold.

Spine — Observations (IMG_2067)

Photo Condition & Quality

Side-profile image showing full spine height.



Findings

- Spine remains straight with uniform curvature.
- No exterior spine splitting detected.
- Internal rust discoloration visible at both staple positions through the spine paper.

Overall Impression

Spine exterior intact; **internal deterioration localized at staple points.**

Upper Staple — Observations (IMG_2068)

Photo Condition & Quality

Clear macro image of metal and surrounding paper.



Findings

- Staple surface shows **heavy, dark brown rust** covering most of the visible metal.
- Rust surface texture uneven, granular.
- Adjacent paper directly under staple crown shows **paper thinning and discoloration** over an area approximately **4×5 mm**.
- No metal fracture observed.

Overall Impression

Upper staple intact but **severely corroded with adjacent paper degradation**.

Lower Staple — Observations (IMG_2069)

Photo Condition & Quality

Clear macro image.



Findings

- Rust coverage similar to upper staple; metal surface fully oxidized.
- Surrounding paper shows **irregular fiber breakup** extending approximately **3–4 mm** from the staple legs.
- No complete tear-through visible beyond immediate staple area.

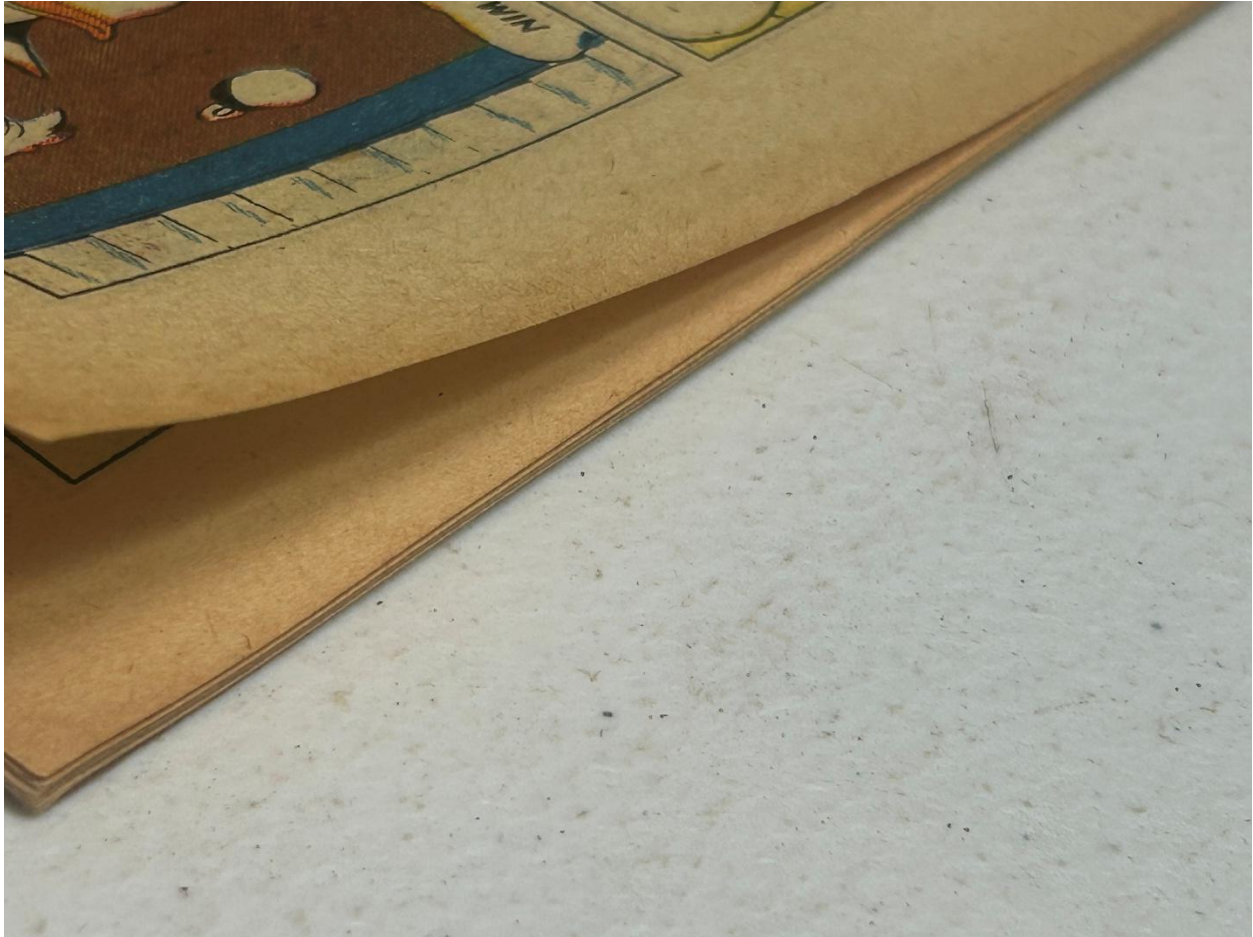
Overall Impression

Lower staple intact but **heavily rusted with measurable fiber disruption**.

Brittleness Test — Observations (IMG_2070)

Photo Condition & Quality

Clear macro image showing a page corner bent outward against a neutral background, with fibers and surface texture sharply visible.



Findings

- Page corner flexed without audible cracking.
- Bent area returns partially toward flat, indicating retained flexibility.

Overall Impression

Paper **not brittle**.